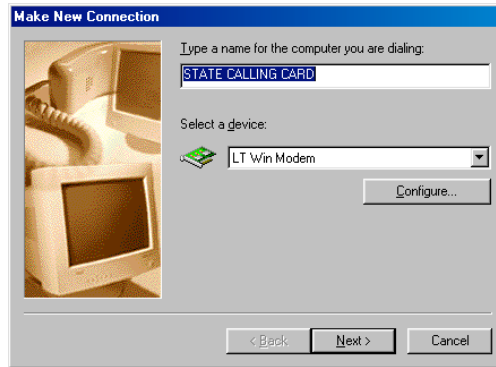


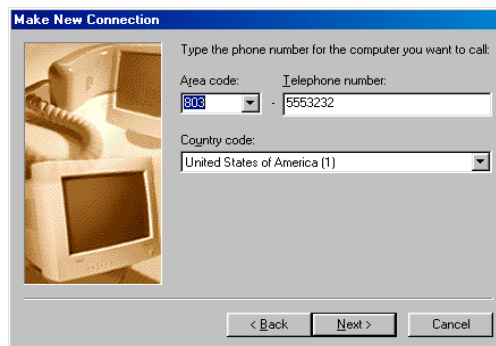
## USING DIAL-UP NETWORKING (WIN 95) WITH THE STATE CALLING CARD

### To set up a network connection by using Dial-Up Networking

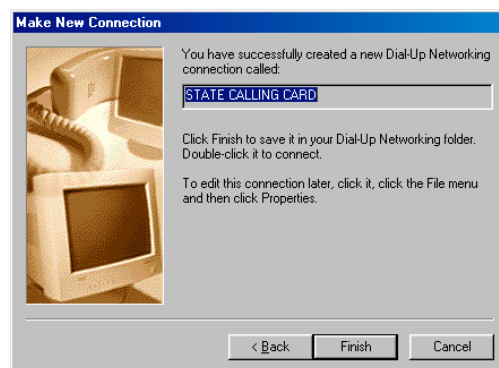
1. Double-click **My Computer**, and then double-click **Dial-Up Networking**.
2. Click on **Make New Connection**. Enter the name of connection that you desire. For this example I have named my connection “ STATE CALLING CARD”. I will refer to this connection throughout this document. Click **Next**.



3. Enter the Area Code and Telephone number of the computer or network you want to call.



4. You have successfully created a new Dial-up Networking connection call “STATE CALLING CARD”. Click **Finish**. Next we will have to modify the dial properties of the connection you just created.

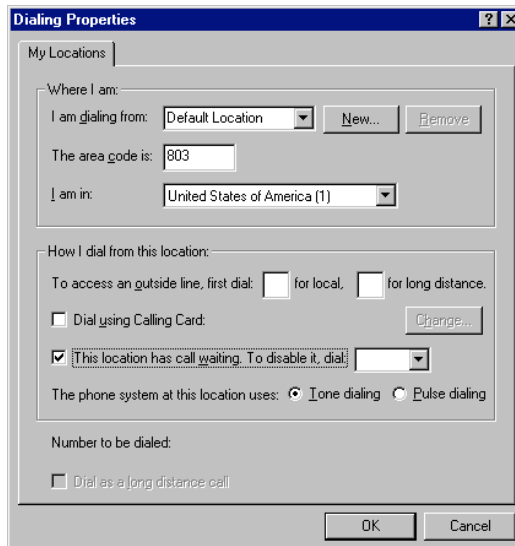


**To Edit our new network connection.**

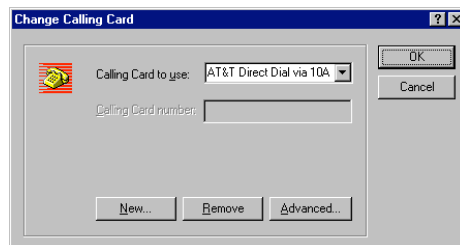
5. Double-click **My Computer**, and then double-click **Dial-Up Networking**. Click on “**STATE CALLING CARD**”. Click “**Dial Properties**”



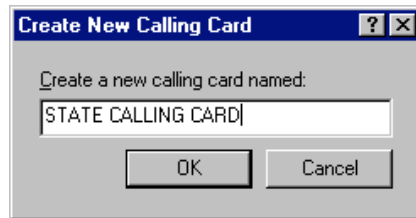
6. You can change the name of the location you will be calling from by Clicking “**New**”. In this example I have used the default. After choosing location please Click the square marked “**Dial using Calling Card**”.



7. Click “**New**”



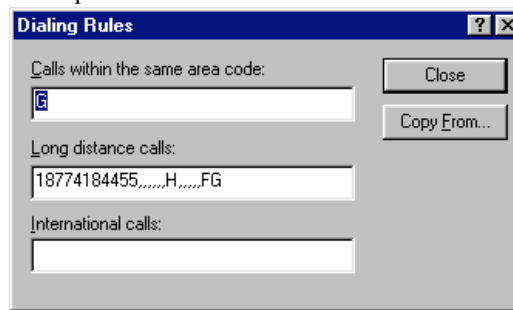
8. Type in “STATE CALLING CARD”. Click **OK**



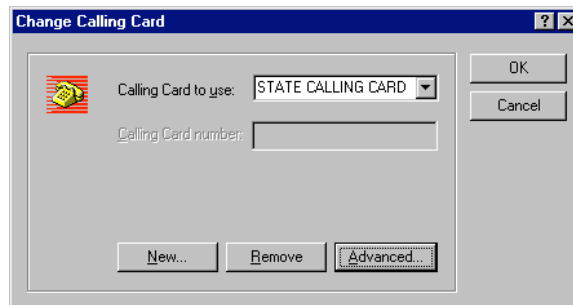
9. Click on “Advanced”



10. Enter Dialing sequence as shown below. Please enter the State Calling Card access number as shown below or use the Alternate Access number 1-800-294-2322. This information is placed in the box marked “**Long Distance Calls:**” The comma’s shown below act as pauses in the Calling Card sequence. Each comma represents a one second pause. It may be required to add an additional pause in this dialing sequence if the calls will not complete. Click **Close**



11. Click “**OK**”.



12. If you are calling from a hotel or any location that requires you to dial a digit such as a “9” to get an outside line please enter that digit in the box marked “**For long distance**” A pause may be required behind the digit such as “9,”. Click **OK**

**Dialing Properties**

My Locations

Where I am:

I am dialing from: Default Location [New... Remove]

The area code is: 423

I am in: United States of America (1)

How I dial from this location:

To access an outside line, first dial: 9 for local, for long distance.

Dial using Calling Card: STATE CALLING CARD [Change...]

This location has call waiting. To disable it, dial: [v]

The phone system at this location uses:  Tone dialing  Pulse dialing

Number to be dialed: 18774184455 [STATE CALLING CARD] 803 2127220

Dial as a long distance call

OK Cancel

13. Enter Password for computer or network connection if applicable. Click on “**Connect**” to connect to the computer or network you are calling.

**Connect To**

STATE CALLING CARD

User name: solomon

Password: [ ]

Save password

Phone number: 5553232

Dialing from: New Location [Dial Properties...]

Connect Cancel